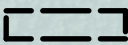

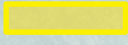
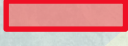

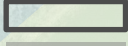



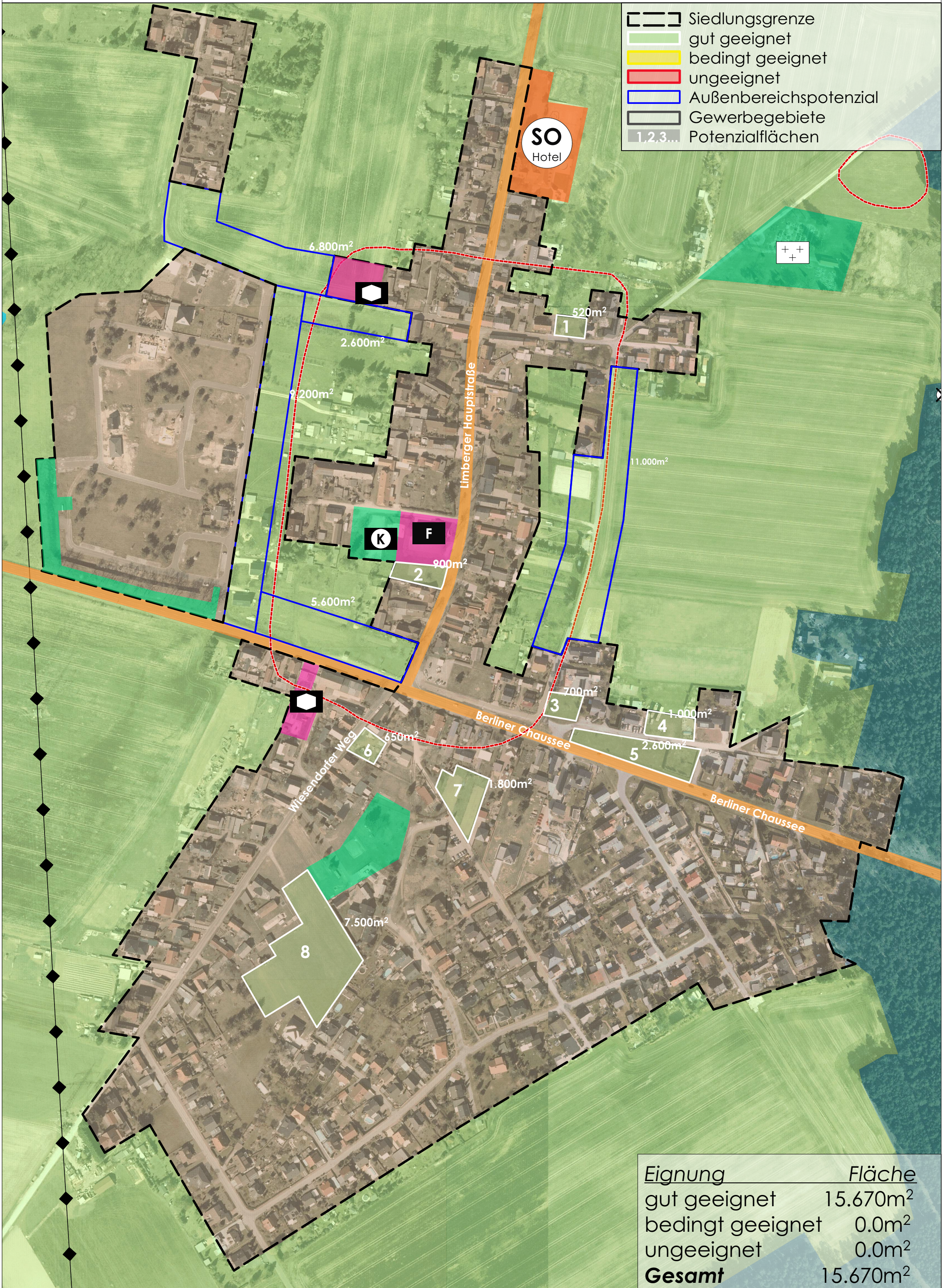
# Glinzig (Glinsk), Kolkwitz

-  Siedlungsgrenze
-  gut geeignet
-  bedingt geeignet
-  ungeeignet
-  Außenbereichspotenzial
-  Gewerbegebiete
-  Potenzialflächen



Eignung	Fläche
gut geeignet	6.450m <sup>2</sup>
bedingt geeignet	1.900m <sup>2</sup>
ungeeignet	0.0m <sup>2</sup>
<b>Gesamt</b>	<b>8.350m<sup>2</sup></b>

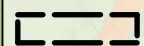






# Limberg (Limbark), Kolkwitz

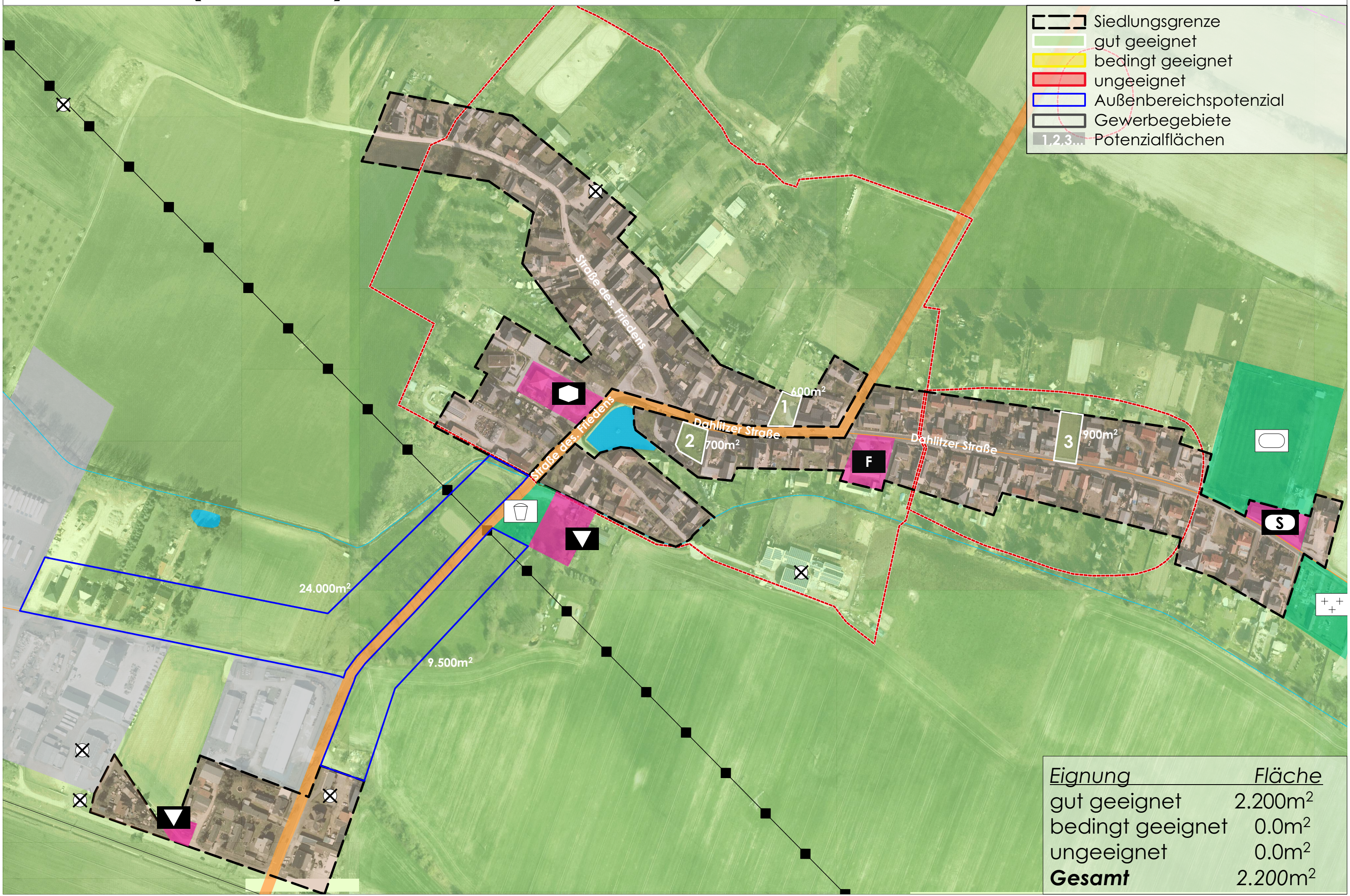


- Siedlungsgrenze
- gut geeignet
- bedingt geeignet
- ungeeignet
- Außenbereichspotenzial
- Gewerbegebiete
- 1,2,3... Potenzialflächen

<i>Eignung</i>	<i>Fläche</i>
gut geeignet	15.670m <sup>2</sup>
bedingt geeignet	0.0m <sup>2</sup>
ungeeignet	0.0m <sup>2</sup>
<b>Gesamt</b>	<b>15.670m<sup>2</sup></b>

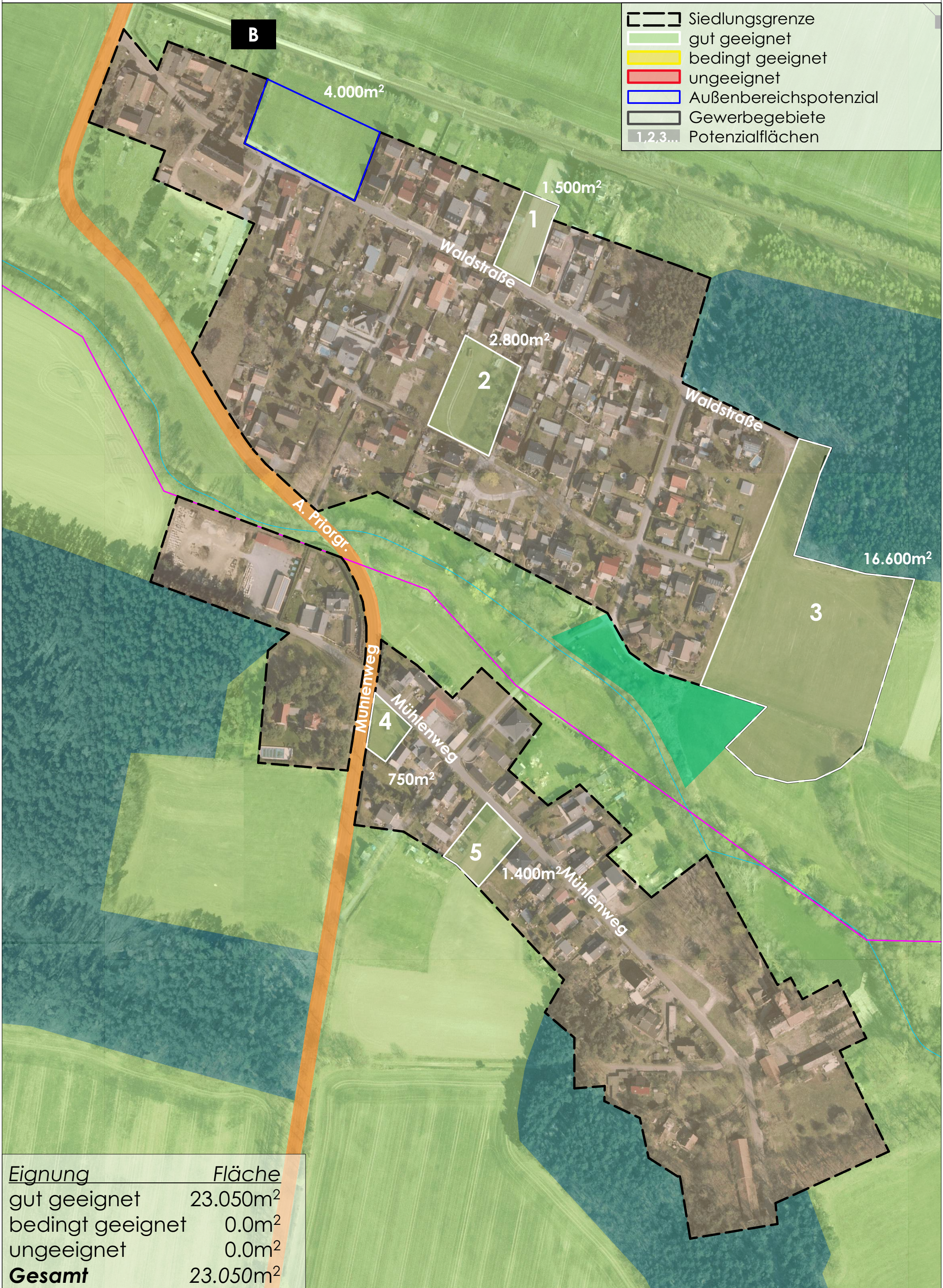
# Kunersdorf (Kósobuz)-Nord, Kolkwitz

-  Siedlungsgrenze
-  gut geeignet
-  bedingt geeignet
-  ungeeignet
-  Außenbereichspotenzial
-  Gewerbegebiete
-  1,2,3... Potenzialflächen

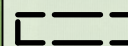
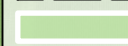



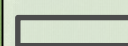



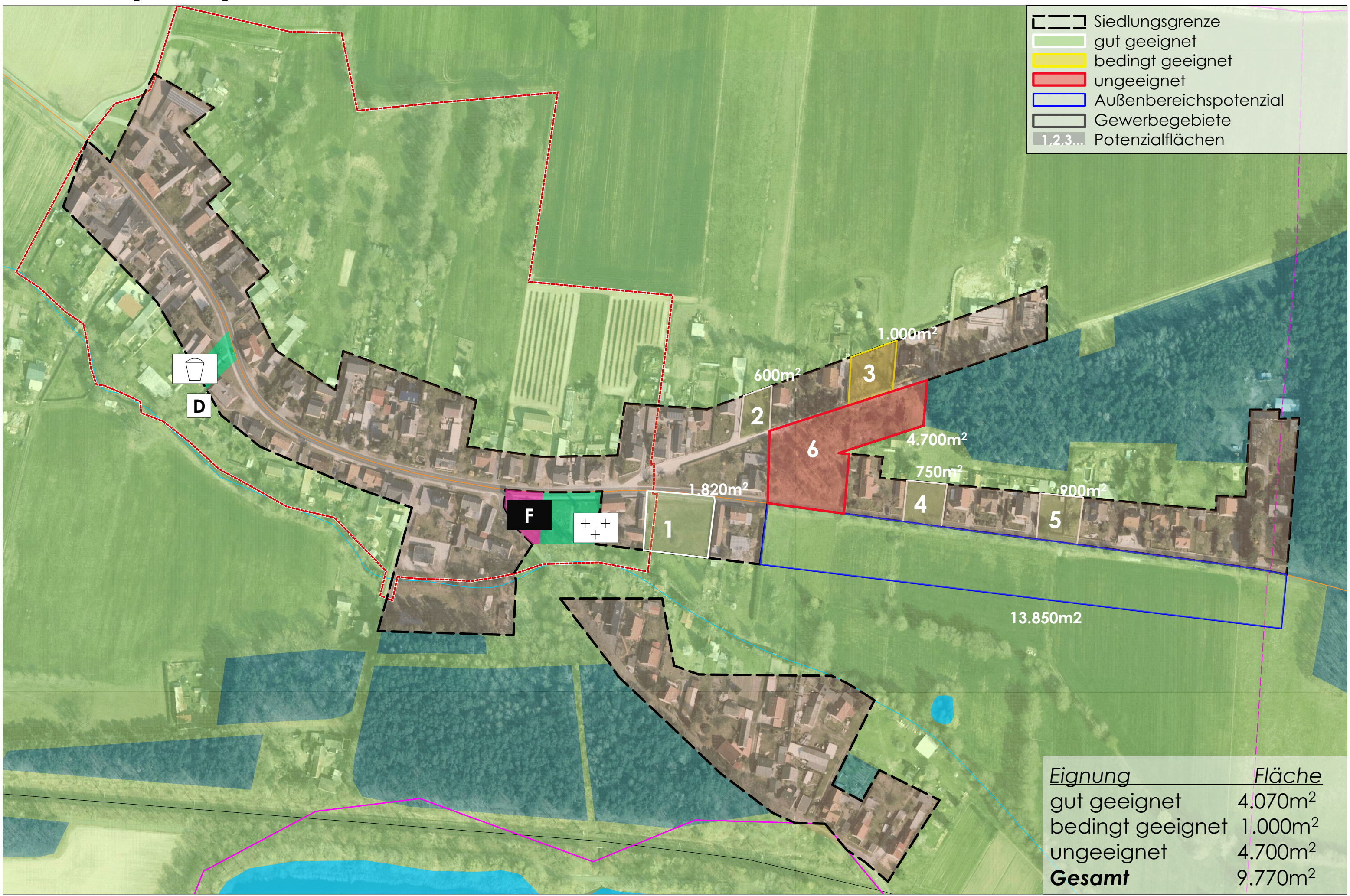
Eignung	Fläche
gut geeignet	2.200m <sup>2</sup>
bedingt geeignet	0.0m <sup>2</sup>
ungeeignet	0.0m <sup>2</sup>
<b>Gesamt</b>	<b>2.200m<sup>2</sup></b>

# Kunersdorf (Kósobuz)-Süd, Kolkwitz



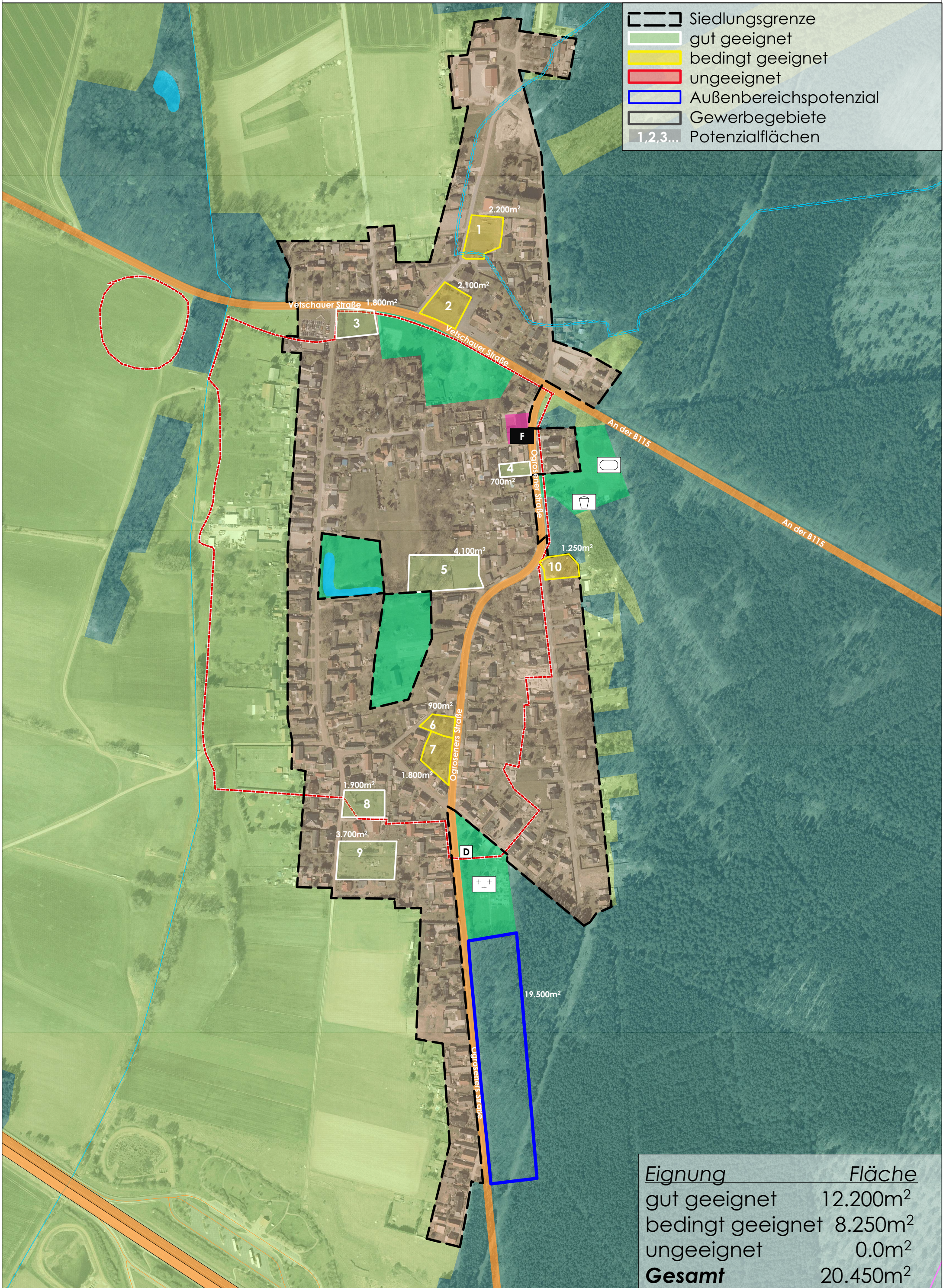
# Dahlitz (Dalic), Kolkwitz

-  Siedlungsgrenze
-  gut geeignet
-  bedingt geeignet
-  ungeeignet
-  Außenbereichspotenzial
-  Gewerbegebiete
-  1,2,3... Potenzialflächen



Eignung	Fläche
gut geeignet	4.070m <sup>2</sup>
bedingt geeignet	1.000m <sup>2</sup>
ungeeignet	4.700m <sup>2</sup>
<b>Gesamt</b>	<b>9.770m<sup>2</sup></b>

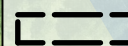
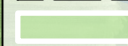

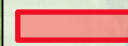

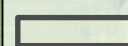

# Eichow (Dubje), Kolkwitz



- Siedlungsgrenze
- gut geeignet
- bedingt geeignet
- ungeeignet
- Außenbereichspotenzial
- Gewerbegebiete
- 1,2,3... Potenzialflächen

Eignung	Fläche
gut geeignet	12.200m <sup>2</sup>
bedingt geeignet	8.250m <sup>2</sup>
ungeeignet	0.0m <sup>2</sup>
<b>Gesamt</b>	<b>20.450m<sup>2</sup></b>

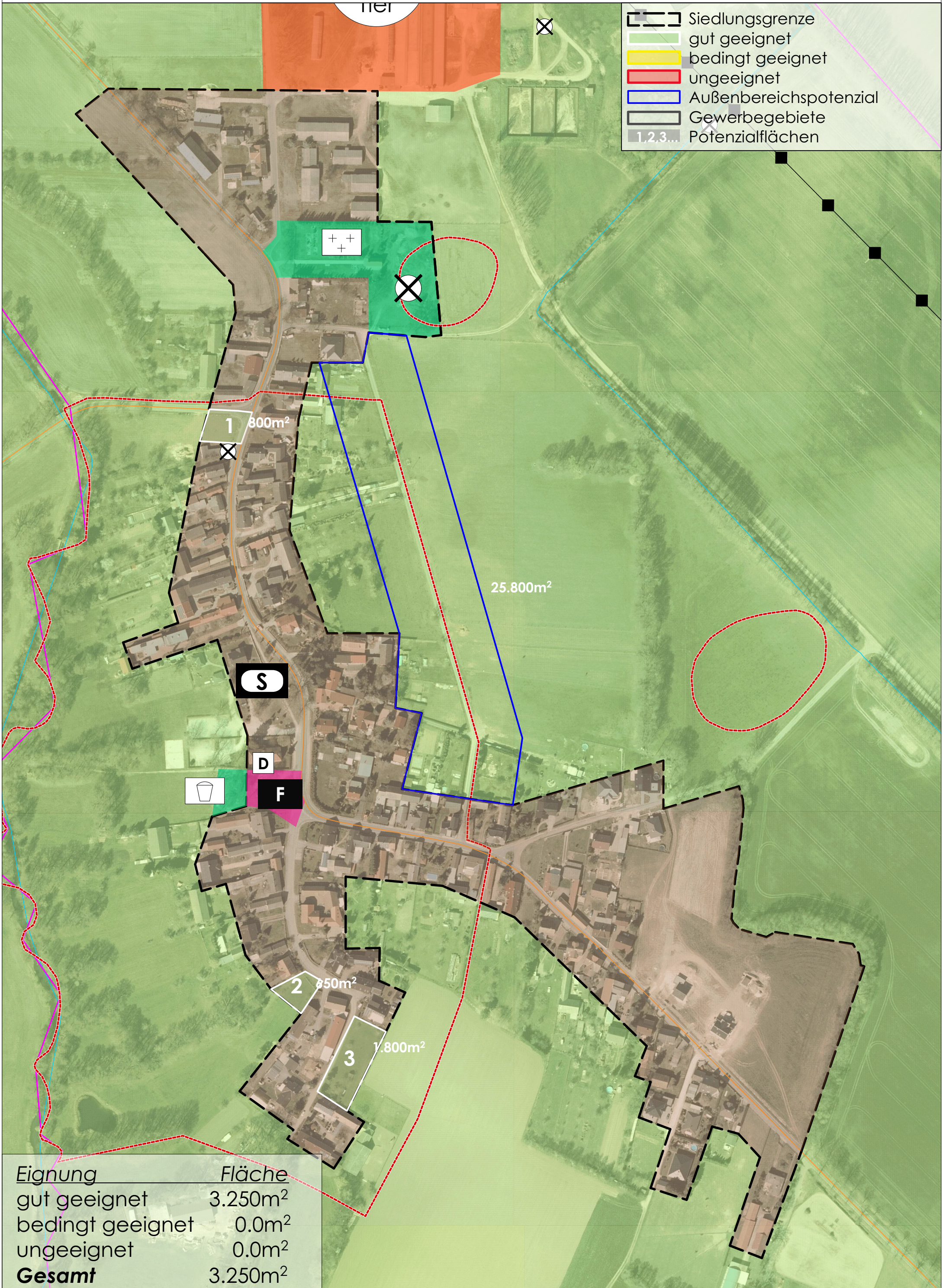
# Papitz (Popojce), Kolkwitz

-  Siedlungsgrenze
-  gut geeignet
-  bedingt geeignet
-  ungeeignet
-  Außenbereichspotenzial
-  Gewerbegebiete
-  1,2,3... Potenzialflächen



Eignung	Fläche
gut geeignet	7.000m <sup>2</sup>
bedingt geeignet	0.0m <sup>2</sup>
ungeeignet	0.0m <sup>2</sup>
<b>Gesamt</b>	<b>7.000m<sup>2</sup></b>

# Milersdorf (Gornej), Kolkwitz



- Siedlungsgrenze
- gut geeignet
- bedingt geeignet
- ungeeignet
- Außenbereichspotenzial
- Gewerbegebiete
- Potenzialflächen

Eignung	Fläche
gut geeignet	3.250m <sup>2</sup>
bedingt geeignet	0.0m <sup>2</sup>
ungeeignet	0.0m <sup>2</sup>
<b>Gesamt</b>	<b>3.250m<sup>2</sup></b>

# Gulben (Gołbin), Kolkwitz

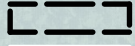



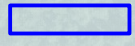
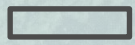



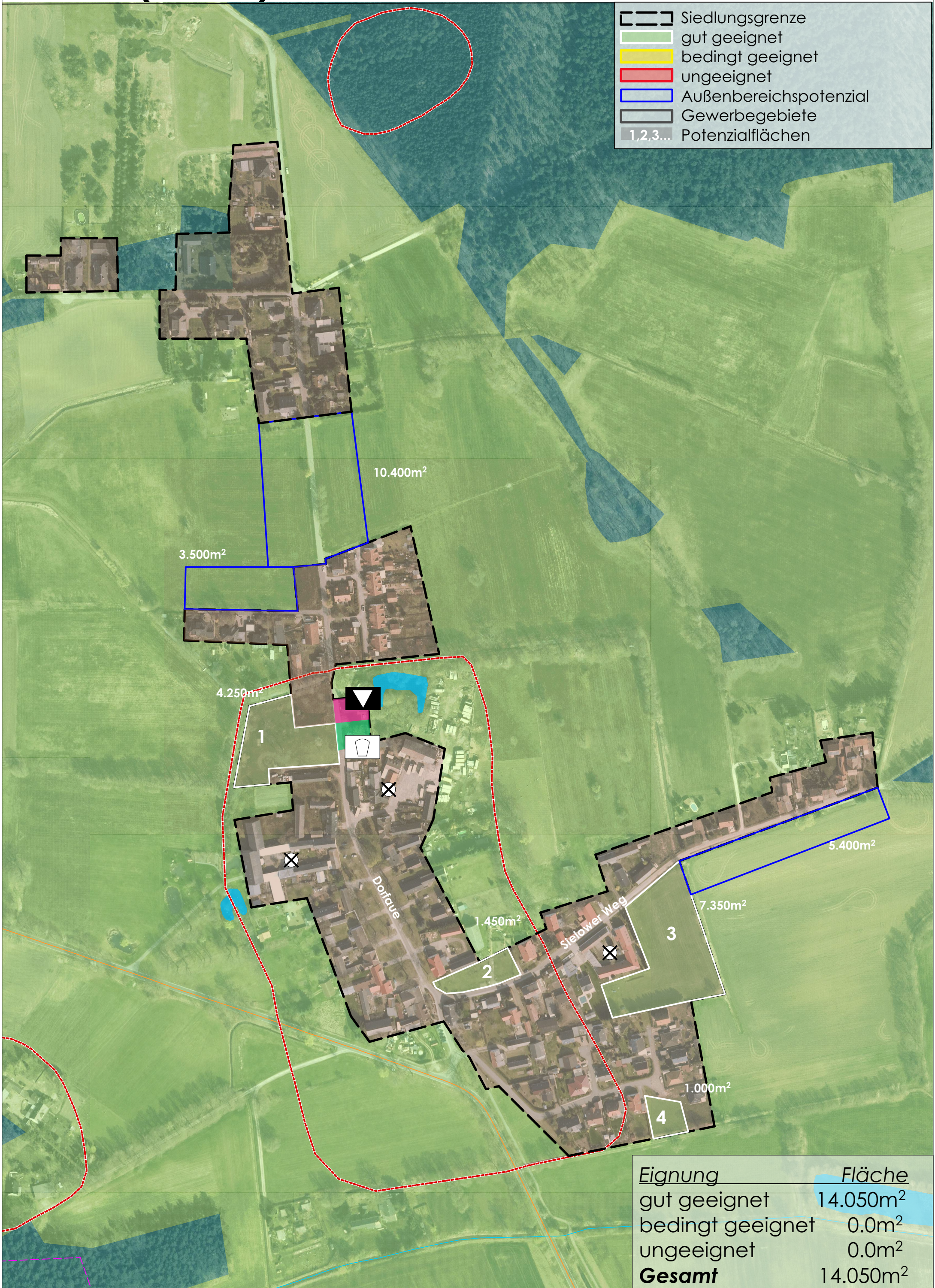
- Siedlungsgrenze
- gut geeignet
- bedingt geeignet
- ungeeignet
- Außenbereichspotenzial
- Gewerbegebiete
- 1,2,3... Potenzialflächen

**SO**  
PV

Eignung	Fläche
gut geeignet	20.600m <sup>2</sup>
bedingt geeignet	8.000m <sup>2</sup>
ungeeignet	12.600m <sup>2</sup>
<b>Gesamt</b>	<b>41.200m<sup>2</sup></b>

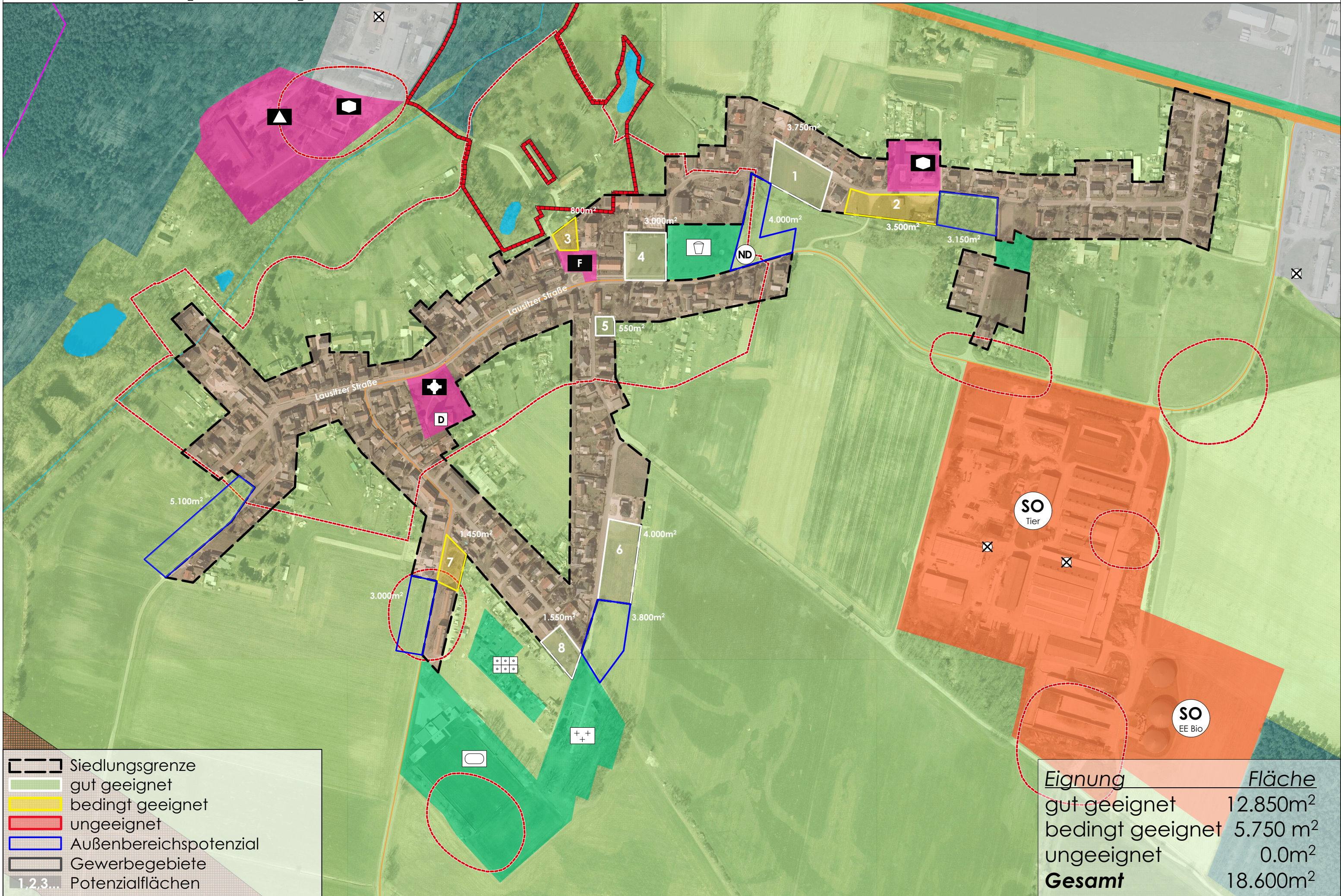
# Zahsow (Cazow), Kolkwitz

-  Siedlungsgrenze
-  gut geeignet
-  bedingt geeignet
-  ungeeignet
-  Außenbereichspotenzial
-  Gewerbegebiete
-  Potenzialflächen



<i>Eignung</i>	<i>Fläche</i>
gut geeignet	14.050m <sup>2</sup>
bedingt geeignet	0.0m <sup>2</sup>
ungeeignet	0.0m <sup>2</sup>
<b>Gesamt</b>	<b>14.050m<sup>2</sup></b>

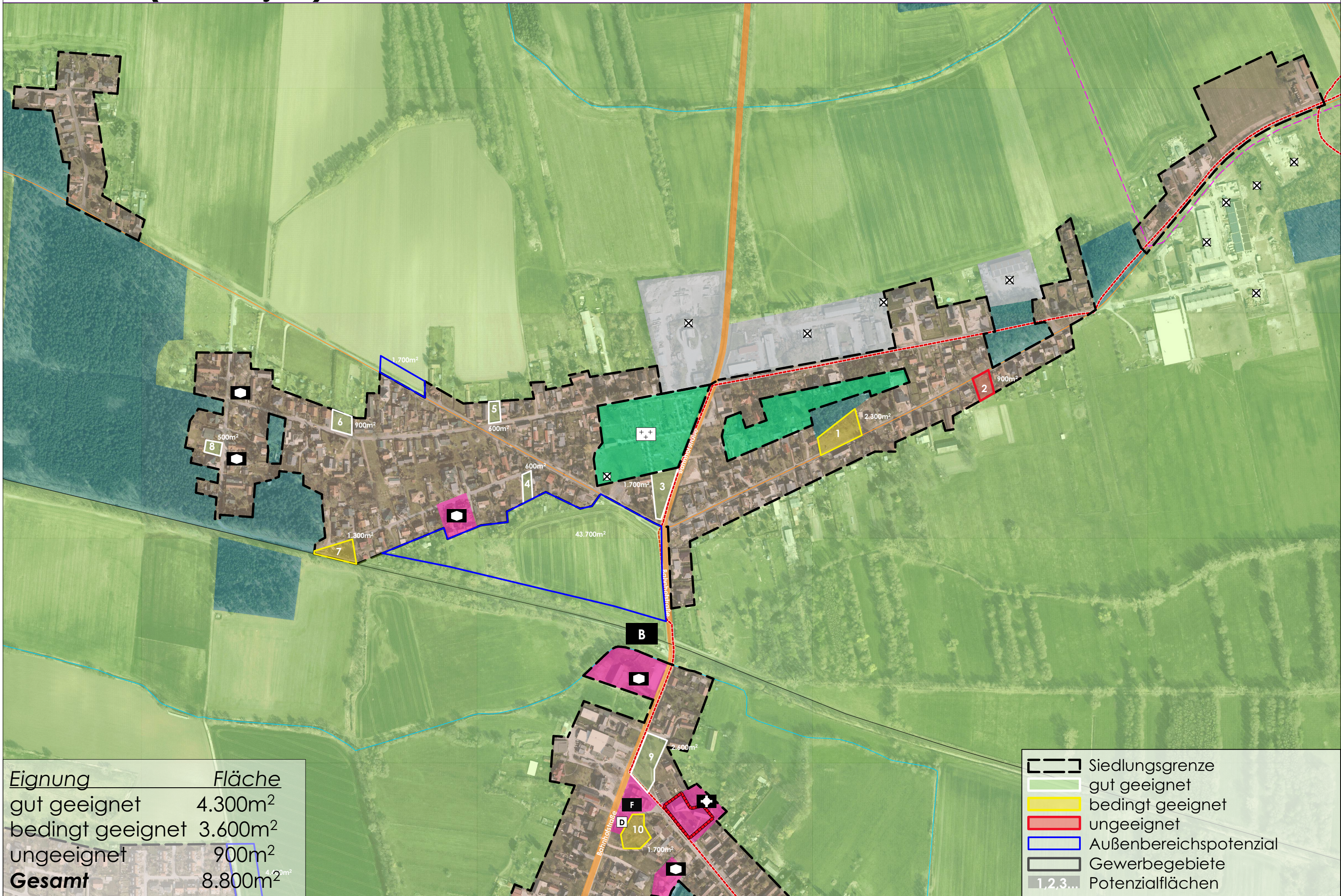
# Krieschow (Kśišow), Kolkwitz



- Siedlungsgrenze
- gut geeignet
- bedingt geeignet
- ungeeignet
- Außenbereichspotenzial
- Gewerbegebiete
- 1,2,3... Potenzialflächen

<i>Eignung</i>	<i>Fläche</i>
gut geeignet	12.850m <sup>2</sup>
bedingt geeignet	5.750 m <sup>2</sup>
ungeeignet	0.0m <sup>2</sup>
<b>Gesamt</b>	<b>18.600m<sup>2</sup></b>

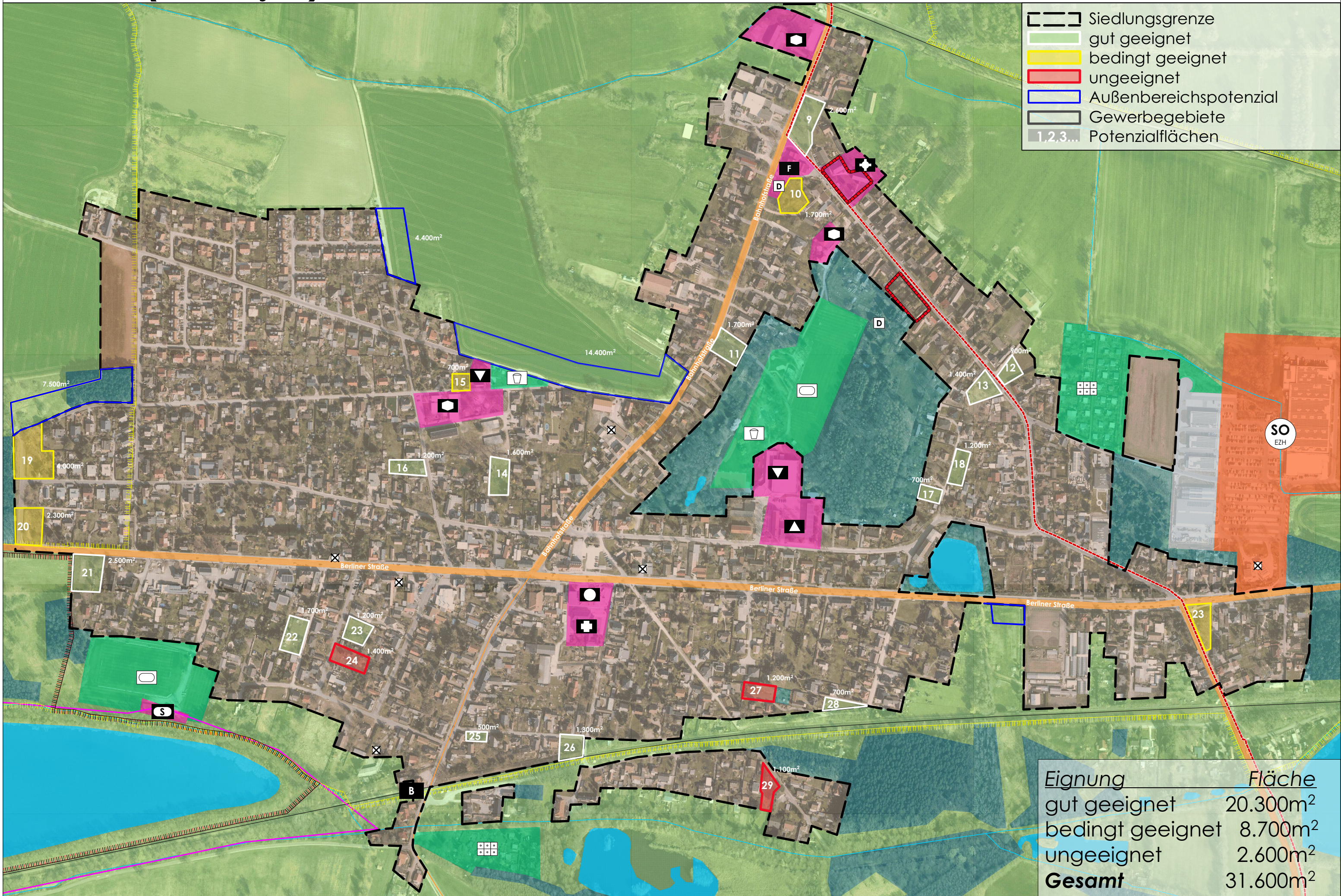
# Kolkwitz (Gołkojce)-Nord



Eignung	Fläche
gut geeignet	4.300m <sup>2</sup>
bedingt geeignet	3.600m <sup>2</sup>
ungeeignet	900m <sup>2</sup>
<b>Gesamt</b>	<b>8.800m<sup>2</sup></b>

- Siedlungsgrenze
- gut geeignet
- bedingt geeignet
- ungeeignet
- Außenbereichspotenzial
- Gewerbegebiete
- Potenzialflächen

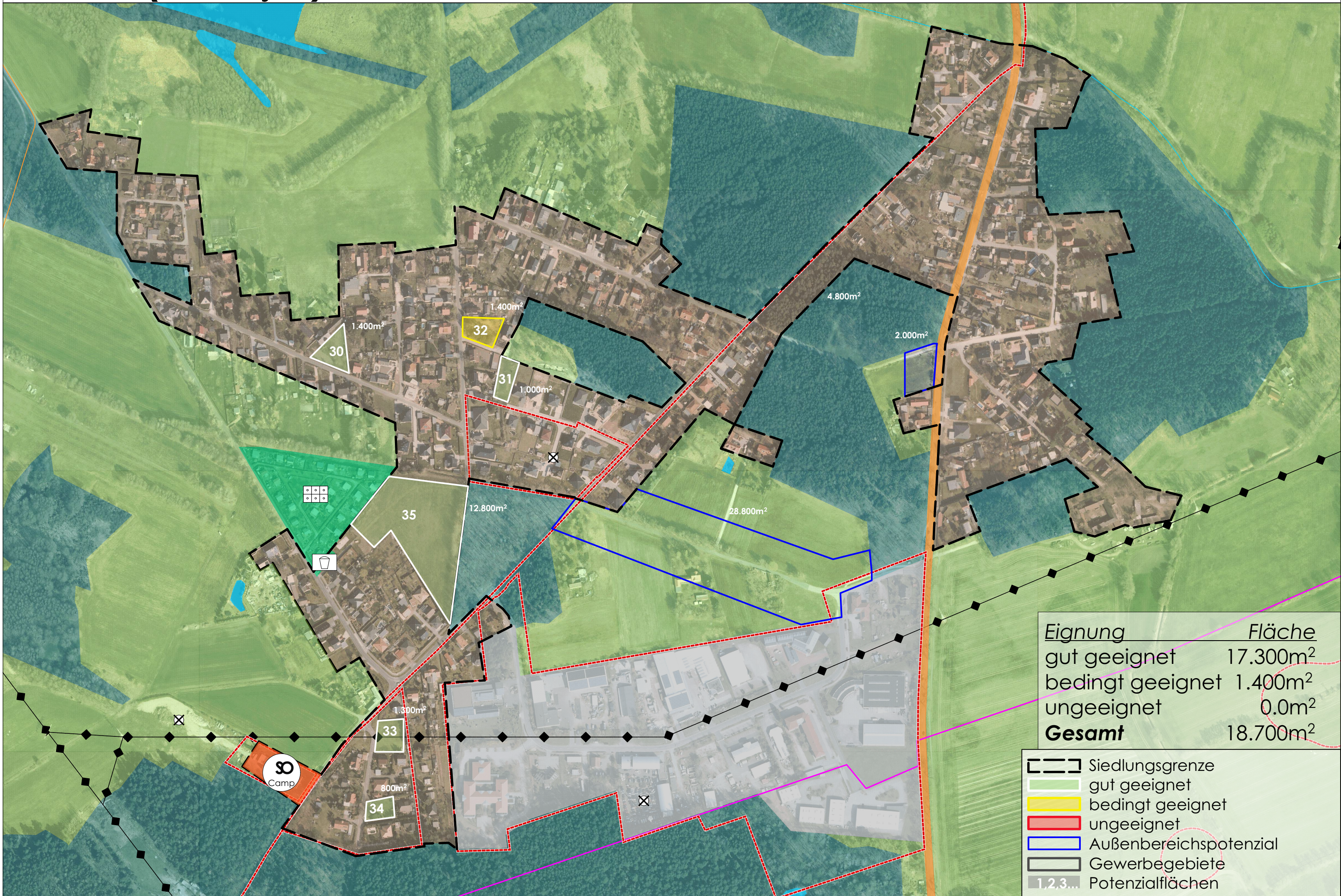
# Kolkwitz (Gołkojce)-Mitte



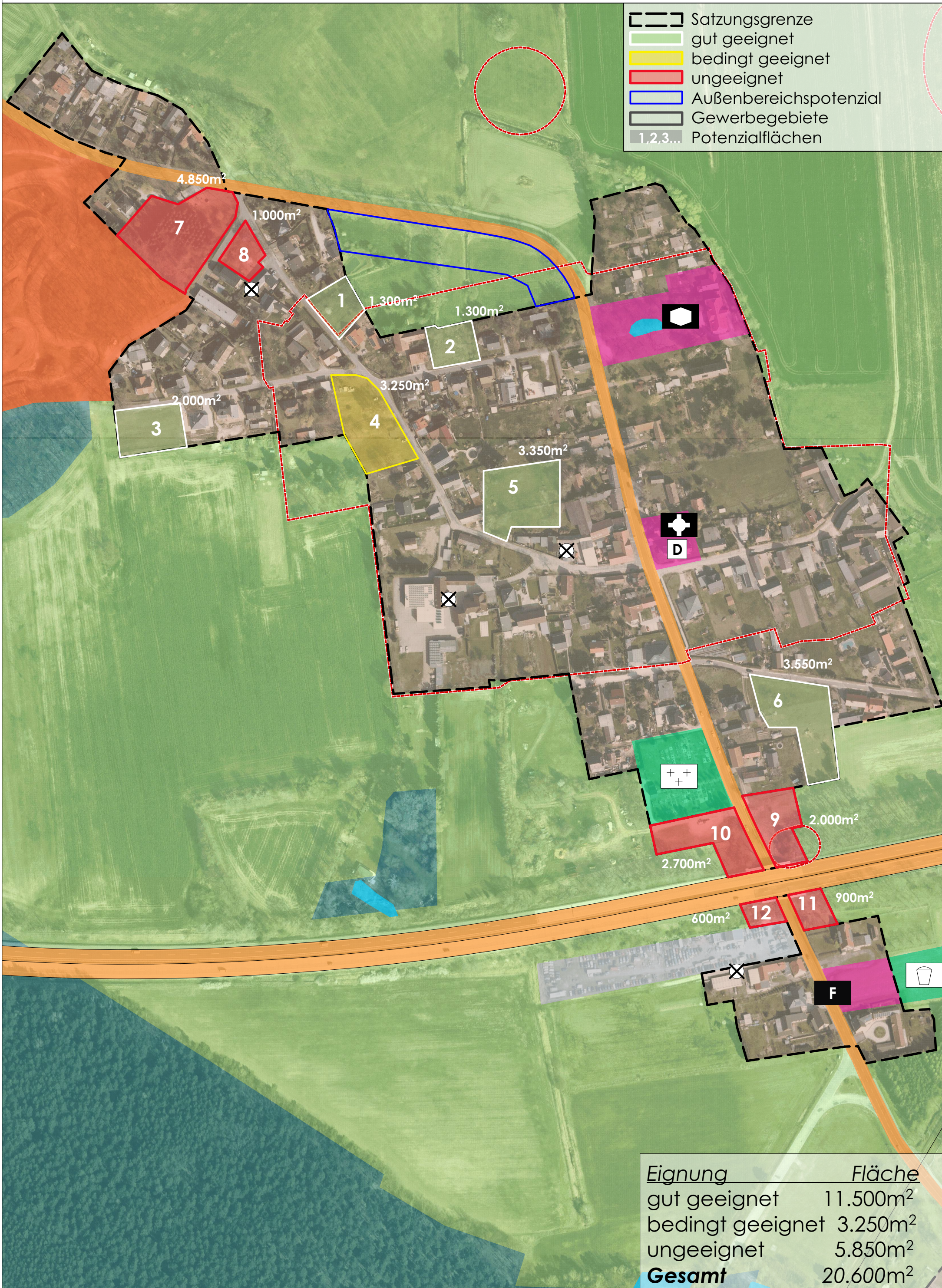
- Siedlungsgrenze
- gut geeignet
- bedingt geeignet
- ungeeignet
- Außenbereichspotenzial
- Gewerbegebiete
- 1,2,3... Potenzialflächen

Eignung	Fläche
gut geeignet	20.300m <sup>2</sup>
bedingt geeignet	8.700m <sup>2</sup>
ungeeignet	2.600m <sup>2</sup>
<b>Gesamt</b>	<b>31.600m<sup>2</sup></b>

# Kolkwitz (Gołkojce)-süd


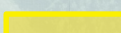
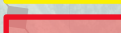


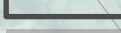


# Hänchen (Hajnk), Kolkwitz



Eignung	Fläche
gut geeignet	11.500m <sup>2</sup>
bedingt geeignet	3.250m <sup>2</sup>
ungeeignet	5.850m <sup>2</sup>
<b>Gesamt</b>	<b>20.600m<sup>2</sup></b>

# Neue und Alte Siedlung, Kolkwitz

-  Satzungsgrenze
-  gut geeignet
-  bedingt geeignet
-  ungeeignet
-  Außenbereichspotenzial
-  Gewerbegebiete
-  Potenzialflächen

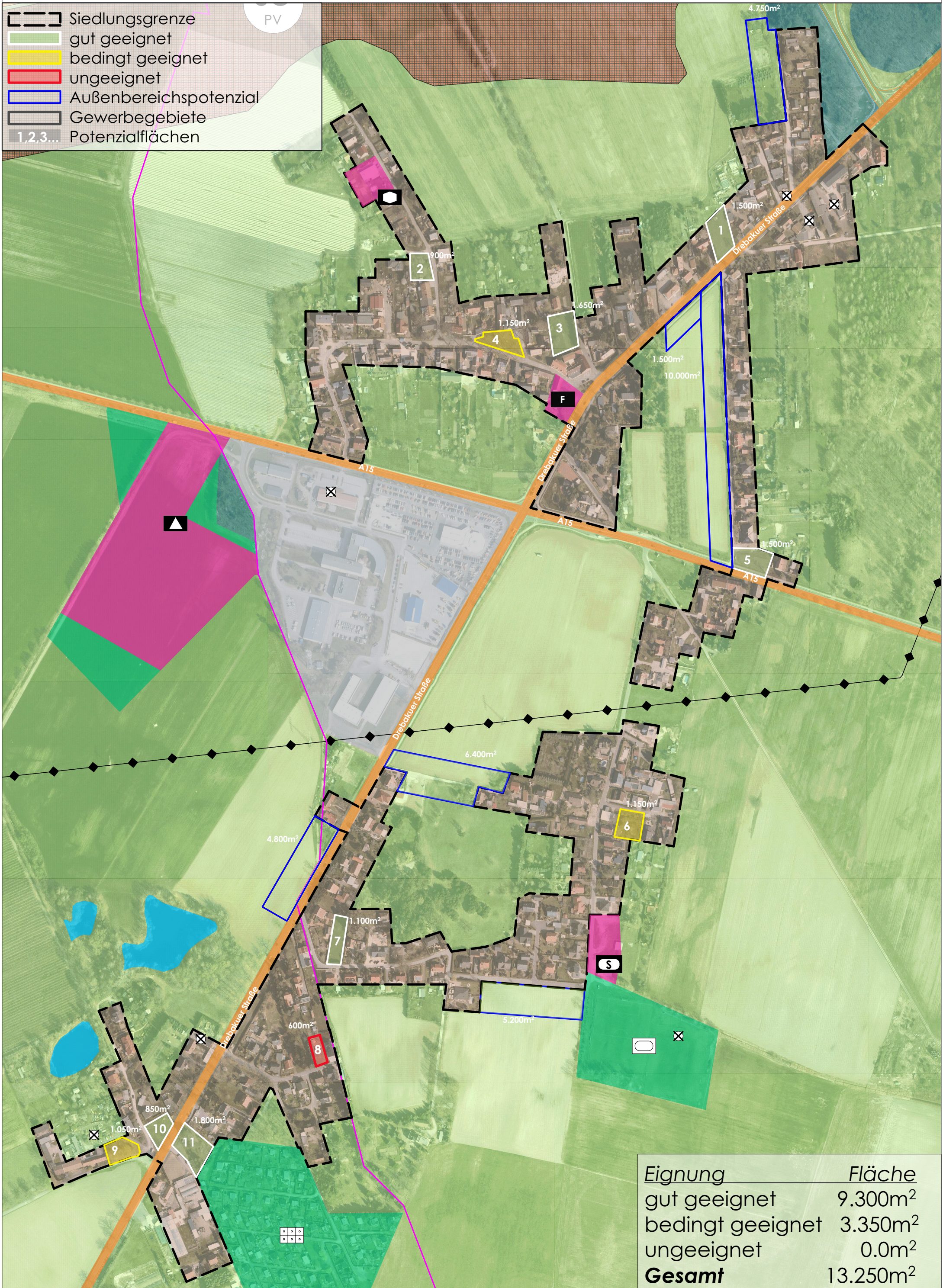
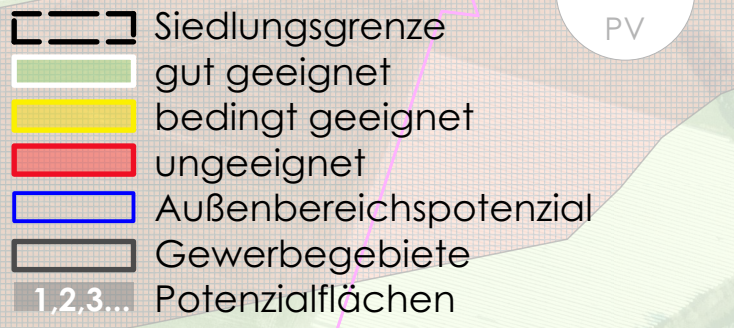


Neue Siedlung

Alte Siedlung

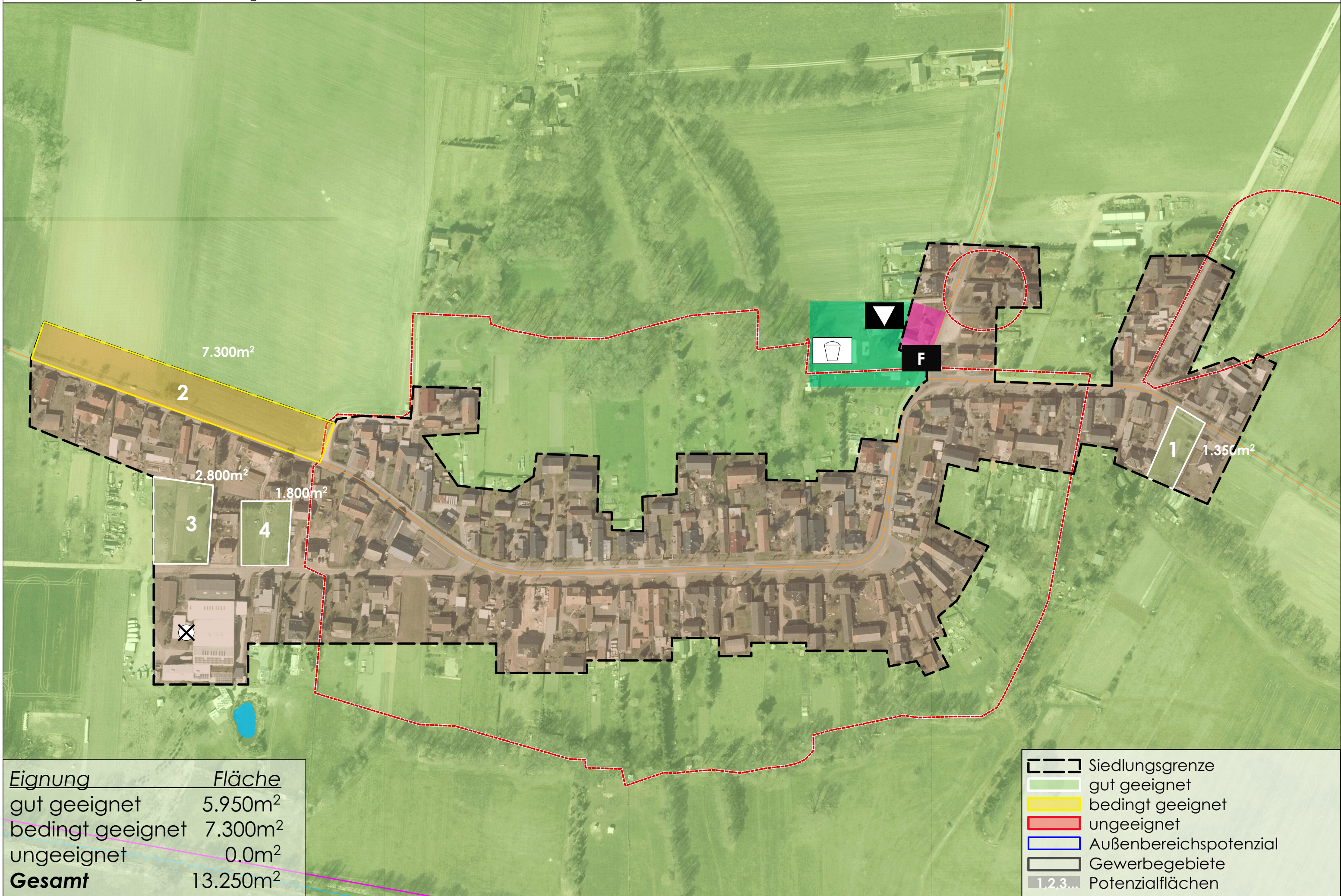
<i>Eignung</i>	<i>Fläche</i>
gut geeignet	5.800m <sup>2</sup>
bedingt geeignet	0.0m <sup>2</sup>
ungeeignet	0.0m <sup>2</sup>
<b>Gesamt</b>	<b>5.800m<sup>2</sup></b>

# Klein Gaglow (Gogolowk), Kolkwitz



<i>Eignung</i>	<i>Fläche</i>
gut geeignet	9.300m <sup>2</sup>
bedingt geeignet	3.350m <sup>2</sup>
ungeeignet	0.0m <sup>2</sup>
<b>Gesamt</b>	<b>13.250m<sup>2</sup></b>


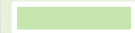



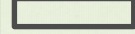

# Babow (Bobow), Kolkwitz



Eignung	Fläche
gut geeignet	5.950m <sup>2</sup>
bedingt geeignet	7.300m <sup>2</sup>
ungeeignet	0.0m <sup>2</sup>
<b>Gesamt</b>	<b>13.250m<sup>2</sup></b>

- Siedlungsgrenze
- gut geeignet
- bedingt geeignet
- ungeeignet
- Außenbereichspotenzial
- Gewerbegebiete
- Potenzialflächen

# Wiesendorf (Naseńce), Kolkwitz

-  Siedlungsgrenze
-  gut geeignet
-  bedingt geeignet
-  ungeeignet
-  Außenbereichspotenzial
-  Gewerbegebiete
-  1,2,3... Potenzialflächen



**SO**  
Touri

++  
+

**1**  
1.100m<sup>2</sup>

In den Wiesen

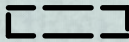

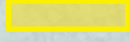

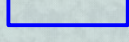
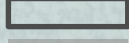
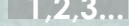


**2**  
670m<sup>2</sup>

**3**  
600m<sup>2</sup>

<i>Eignung</i>	<i>Fläche</i>
gut geeignet	2.370m <sup>2</sup>
bedingt geeignet	0.0m <sup>2</sup>
ungeeignet	0.0m <sup>2</sup>
<b>Gesamt</b>	<b>2.370m<sup>2</sup></b>

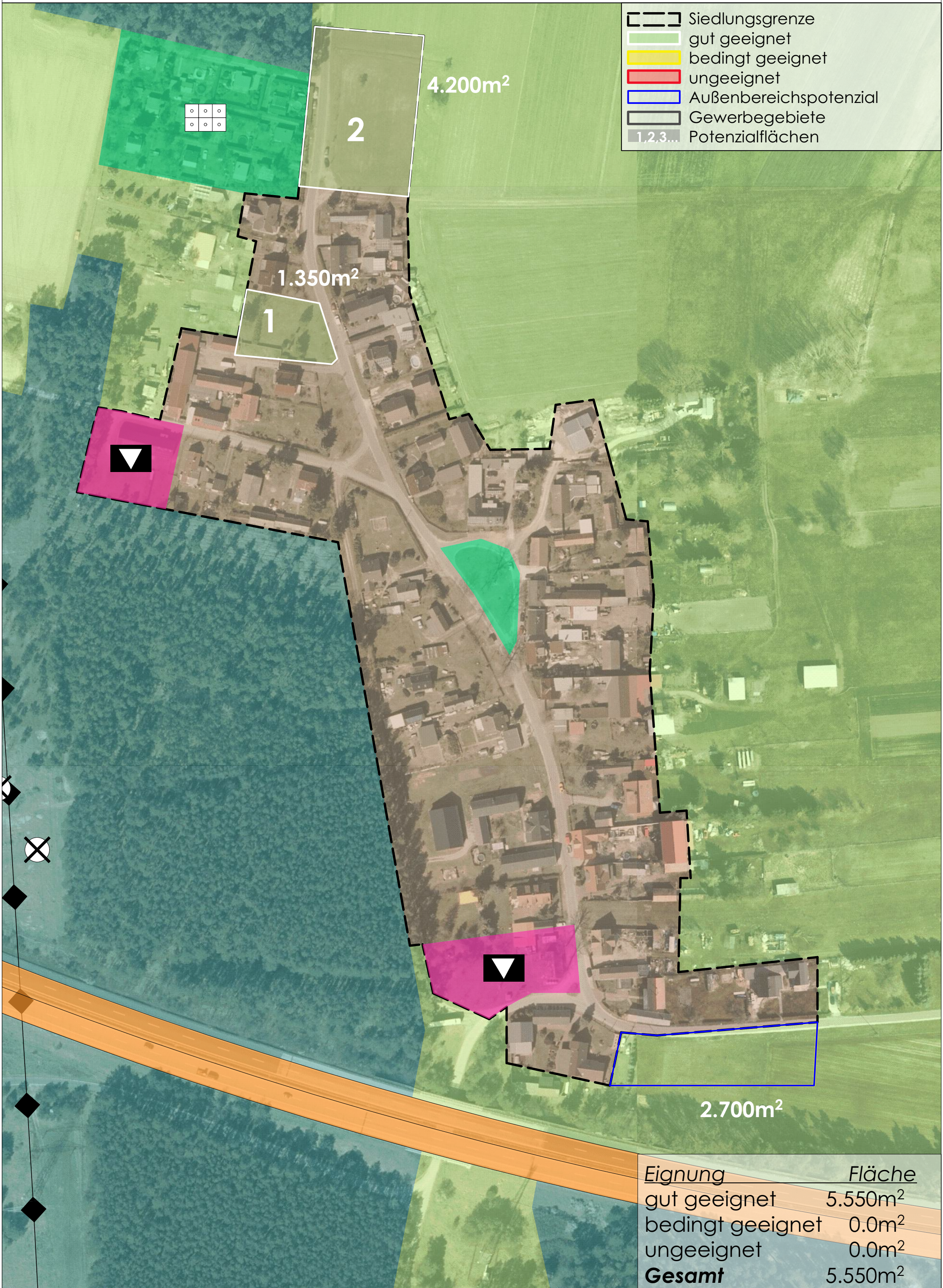
# Brodtkowitz, Kolkwitz

-  Siedlungsgrenze
-  gut geeignet
-  bedingt geeignet
-  ungeeignet
-  Außenbereichspotenzial
-  Gewerbegebiete
-  Potenzialflächen



<i>Eignung</i>	<i>Fläche</i>
gut geeignet	2.180m <sup>2</sup>
bedingt geeignet	0.0m <sup>2</sup>
ungeeignet	0.0m <sup>2</sup>
<b>Gesamt</b>	<b>2.180m<sup>2</sup></b>

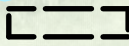

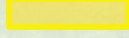
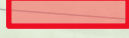



# Kackrow, Kolkwitz



- Siedlungsgrenze
- gut geeignet
- bedingt geeignet
- ungeeignet
- Außenbereichspotenzial
- Gewerbegebiete
- 1,2,3... Potenzialflächen

<i>Eignung</i>	<i>Fläche</i>
gut geeignet	5.550m <sup>2</sup>
bedingt geeignet	0.0m <sup>2</sup>
ungeeignet	0.0m <sup>2</sup>
<b>Gesamt</b>	<b>5.550m<sup>2</sup></b>

# Putgolla, Kolkwitz

-  Siedlungsgrenze
-  gut geeignet
-  bedingt geeignet
-  ungeeignet
-  Außenbereichspotenzial
-  Gewerbegebiete
-  1,2,3... Potenzialflächen



Eignung	Fläche
gut geeignet	800m <sup>2</sup>
bedingt geeignet	0.0m <sup>2</sup>
ungeeignet	0.0m <sup>2</sup>
<b>Gesamt</b>	<b>800m<sup>2</sup></b>